



3-1/8 DIRECTIONAL COUPLER

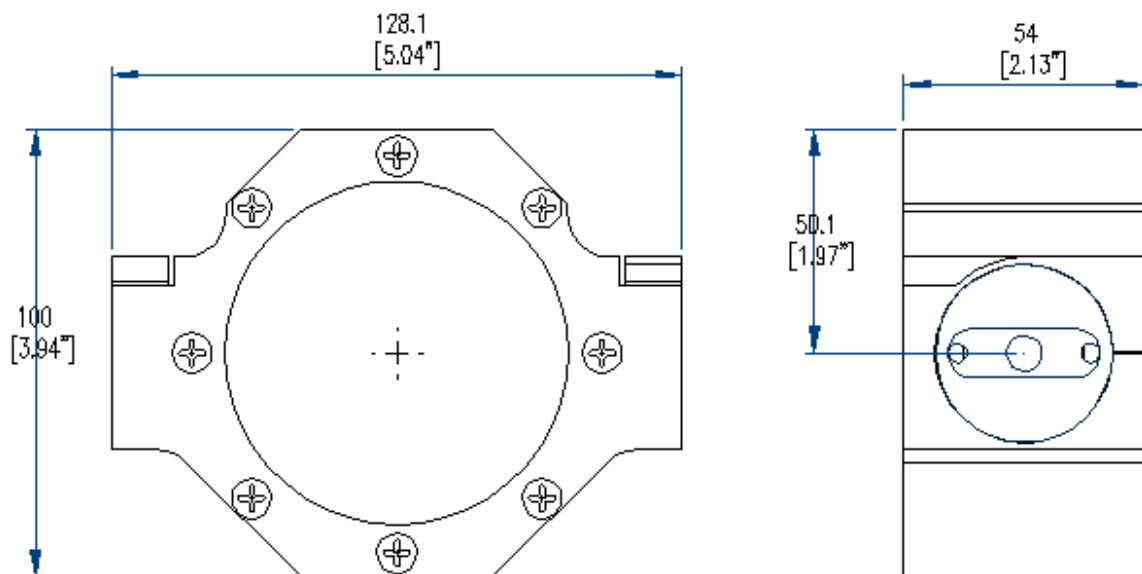
160~165 MHz

ADDC016-3-1/8

Electrical Characteristics

Parameter	Units	Specifications
Frequency	MHz	160 ~ 165
Return Loss		30
DIRECTIVITY		25
Power	Max.	5kW
Coupling (FWD&REV)	dB	-40.0±1.0
Connector Size	WR	3+1/8"
Dimensions	mm	128 x 54 x 100

Mechanical Dimensions



Unit: mm[inch]

